

# Informational Update on Outfall 005 Sediment Removal Action for the Sediment Remedy Program



Fall 2014

**As part of remedy design studies in Dark Head Cove, Lockheed Martin found higher concentrations of contaminants in sediment in areas targeted for removal**

## Project History

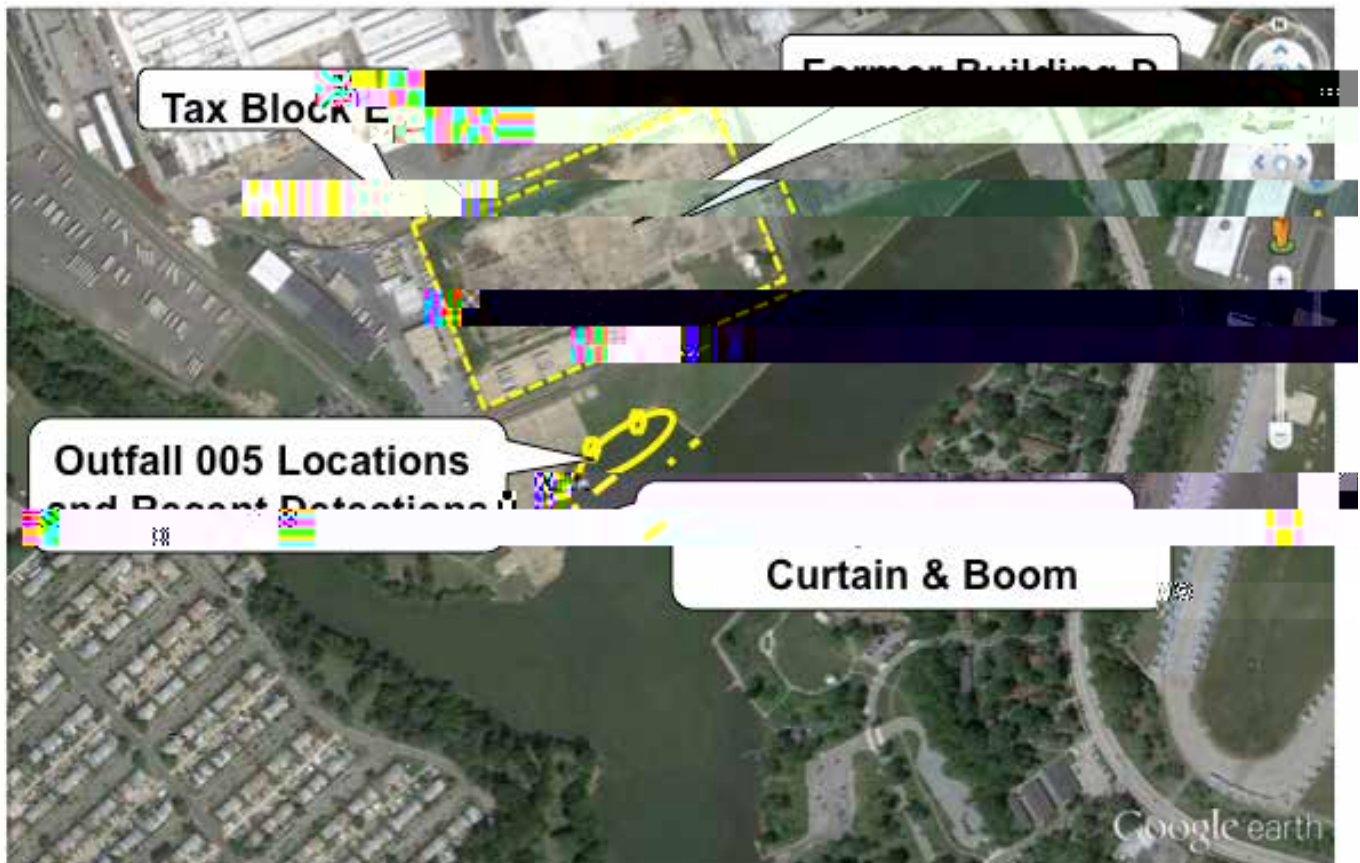
association leaders, providing briefings and informational

***For Details on upcoming Public Information Session Please Go To Page 6***

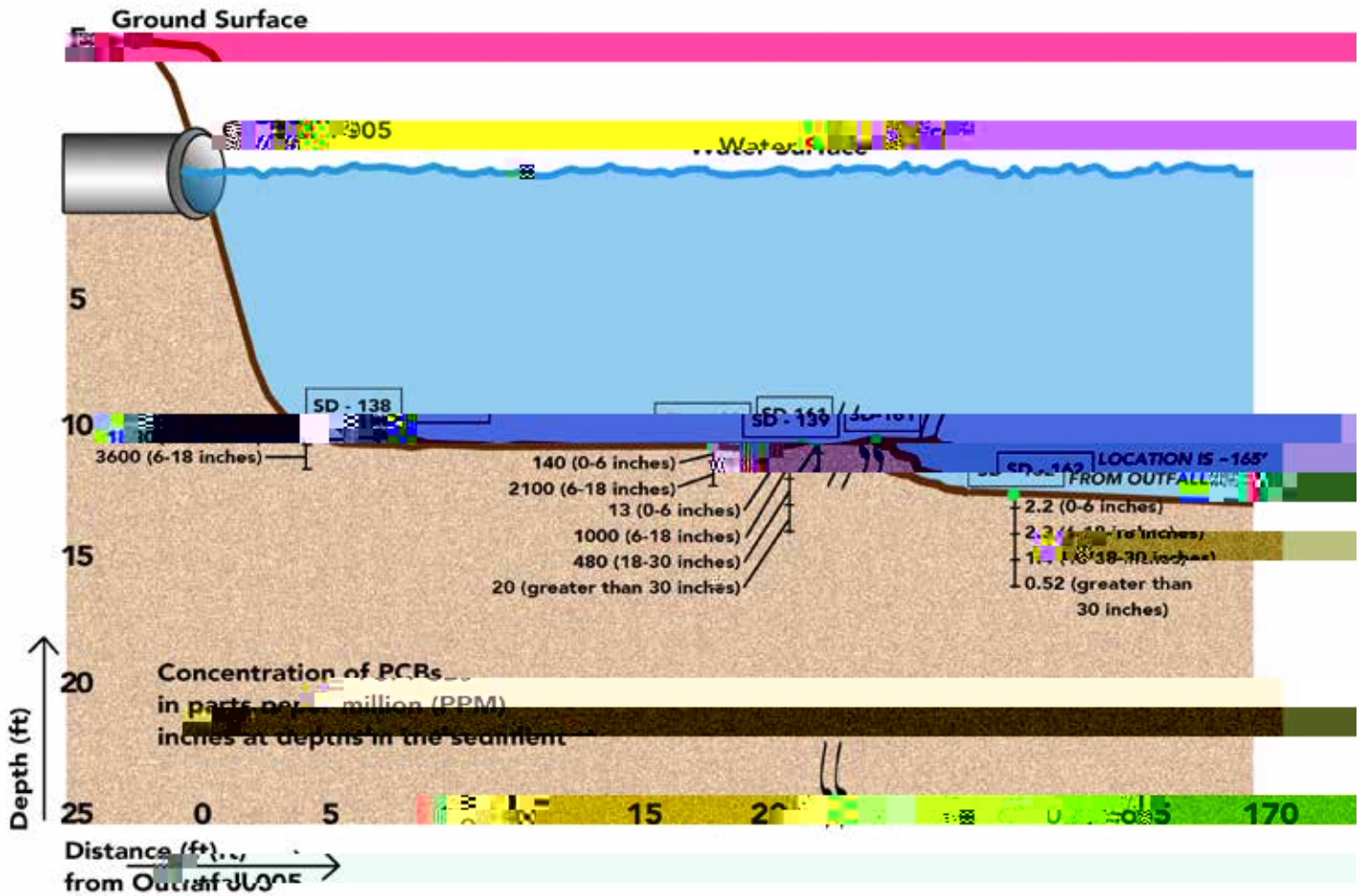
The recommended final approach was approved by the

*in situ*

In order to develop the final plans for implementing the



*Area of more highly contaminated sediment findings at Middle River Complex.*



*Higher concentrations of polychlorinated biphenyls (PCBs) have been identified in sampling, and an Outfall 005 Sediment Removal Action is being planned.*

like the summer recreational season and the fish spawning

to provide the data necessary to refine the final design for

## Questions and Answers

**1. Is it still safe to eat fish or crabs from Dark Head Cove?**

recommend limiting the number of fish and crab consumed

<http://www.mde.state.md.us/programs/Marylander/CitizensInfoCenterHome/Pages/citizensinfocenter/fshandshellfsh/index.aspx>

**2. When were warning signs erected?**

**3. Where did the Polychlorinated Biphenyls (PCBs) come from?**

- PCBs were found in the first four feet of soil in the

for fighting fires.

once housed cleaning, plating, and finishing rooms, an

the first four feet of soil in one

**4. How do you know that additional contaminants are not lodged in the uncleaned portions of the two branches to Outfall 005?**

entirely, reconfigured, and new storm drain piping installed.

**5. What about contaminants that could be uncovered as you clean up Block E, especially if it rains during the work and in case of severe weather conditions such as rainstorms, hurricanes and windstorms?**

## Glossary

### Cleanup

18. These are typical lengths of time to obtain certified environmental data. After having considered the significance solutions, Lockheed Martin verbally notified the Maryland

### EPA

### MDE

### Middle River Complex

7. If there is an initial action to dredge the area of contamination in Dark Head Cove, will you dredge a second time during final clean up?

but will make a final determination of what is necessary in

8. Will dredging disturb the contaminants and expose them as a potential risk to humans or the environment?

### Polychlorinated Biphenyls (PCBs)

### Remediation

### Sediment

### Silt Curtain

used to contain sediments within a defined area of a water

### Surface Water

#### For More Information:

Questions may be addressed to:  
Lockheed Martin Corporation



**For address change or undeliverable  
mail return to:**

**Lockheed Martin Corporation  
1195 Sarasota Center Blvd  
Sarasota, FL 34240**

**Lockheed Martin Would Like to Invite the Community to  
a Public Information Session On Outfall 005 Sediment  
Removal Action Plans at the Middle River Complex**

---

**Date: Monday, October 27, 2014**

**Location: Marshy Point Nature Center • 7130 Marshy Point Road**

**Times: 5 to 7 p.m. - Informal poster session with personalized attention and  
questions/answers; 7 p.m. - Formal presentation of proposed plans,  
followed by a question and answer and comment period**

**Light refreshments will be served.**